

## INTRODUCTION

**"Comprehensive municipal plan"** means a compilation of policy statements, goals, standards, and maps for guiding the physical, social, and economic development, both private and public, of the municipality and its environs." (Mn State Statute **462.352**)

### Purpose of the Comprehensive Plan

A Comprehensive Plan is a *legal document* that states the goals and intentions of a city. It is a city's official statement used to guide development, redevelopment, and preservation in the community. It is used as the foundation for validating land use controls, such as zoning, and provides documented proof of the city's intentions and strategies. Courts consult the Comprehensive Plan during legal matters on land use. Comprehensive Plans also lay the framework for growth management, addressing strategies that may help contain urban sprawl. A comprehensive plan represents the City's recommendations for the future development of the community.

The plan serves as a guide to decision making in the community, for both the public and private sector by setting forth policies, plans, and programs governing land use, transportation, community facilities, and services. It is a *communication device* between the city, other public and private agencies, and private individuals or organizations with a stake in the development of the community.

The State Statutes indicate that the purpose for a comprehensive plan is "to insure a safer, more pleasant, and more economical environment for residential, commercial, industrial, and public activities, to preserve agricultural and other open lands, and to promote the public health, safety, and general welfare of the citizens of the community.

The Comprehensive Plan also serves these purposes:

- To promote the public interest in establishing a more functional, healthy, interesting, and efficient community by serving the interest of the community at large;
- To treat the entire community as one system and inject long-range consideration into determinations affecting short-range action;
- To provide a framework for policies and actions leading to the improvement of the physical, financial, and social environment of the city;
- To include citizen driven goals into the future planning process;
- To develop lands wisely so they can serve citizens more effectively and provide public services with less cost, thus creating a more secure tax base; and
- To serve as a legal foundation for zoning and subdivision ordinances.

## **Planning Process**

This plan is an update of the Land Use Plan that was completed in 2013. During that process, the City updated the goals, objectives, and activities. The comprehensive planning process for Elysian included census data research, a public survey and three working sessions with members of the planning commission, council, and Economic Development Authority (EDA) leaders. The following activities discuss the input efforts that went into the 2013 Land Use Plan and the current update.

### Community Survey – Fall 2006

A community survey was delivered to all residents of the City of Elysian. Surveys were hand delivered by volunteers who, a week later, returned to pick up completed forms. One hundred twelve completed surveys were returned to the City.

### Business Survey – Fall 2006

A business survey was delivered to business owners in Elysian by a community volunteer. Just nine surveys were completed and turned in.

### Community Meetings – May 9 & June 26, 2007

Fewer than 20 people attended these two meetings. Advertisements were placed in the newspaper and the meeting notice was included in the utility billing. The purpose of the meetings was to collect feedback from participants regarding the survey and proposed future activities as drafted by the City's Planning Commission for purposes of determining important issues that should be addressed in the city's long-range plan. Individuals in attendance were given the opportunity to visit with members of the Council, Planning Commission, and City Staff about their concerns and needs, write down suggestions for future actions, and to vote on the proposed actions, as drafted by the Planning Commission.

### Plan Review and Adoption

This process included a number of Planning Commission meetings for the purpose of reviewing existing plan goals, determining new goals; two public open house meetings to review and explain collected data and goals of the comprehensive plan to citizens, a Public Hearing (November 27, 2007) held by the Planning Commission to review the final Comprehensive Plan Draft, and a final City Council meeting (December 10, 2007) accepting the plan as official city policy.

## **Update Process May 2023 through August 2024:**

### Community Survey – Spring/Summer 2023

A community survey was delivered to all residents of the City of Elysian. Surveys were conducted via an electronic survey platform. Survey links were provided to citizens through City social media platforms and inserted in monthly utility bills. Citizens were given options to receive a paper version to complete and return to City Hall for manual entering into the electronic platform. One hundred thirty surveys were completed.

### Fall 2023 – Summer 2024

The Planning Commission met to discuss and review the survey results and begin discussions for updates to the Comprehensive Plan. Three Joint meetings with the City Council, EDA, Planning Commission, and City Staff were held to review and update the goals and objectives enclosed in

*Elysian Land Use Plan – Approved by Council September 9, 2024*

this document. Resulting in refining, adding, and deleting outdated and task-oriented items and adjusting the Strategies specified from the 2013 plan update.

August 7, 2024

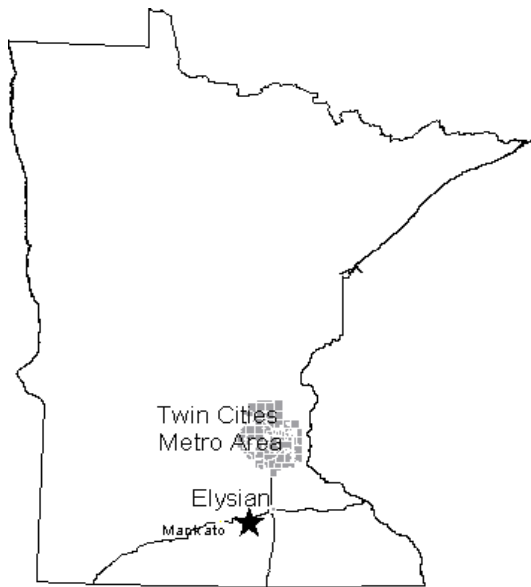
The Planning Commission hosts a Community Open House. The Public is invited to attend to provide input on the proposed updates to the Elysian Comprehensive Land Use Plan. Only a handful of people attended the Open House. Advertisements were placed in the newspaper, flyers were hung in businesses throughout the City, and the meeting notice was included in the utility billing. The purpose of the meeting was to collect feedback from participants on the content of the proposed update to the long-range plan as drafted by the City's Planning Commission. Individuals in attendance were given the opportunity to visit with members of the Planning Commission and City Staff about their concerns and comments.

September 9, 2024

A Public Hearing was held at the City Council meeting on September 9, 2024 and the City Council voted to accept the updated plan as official city policy.

## **The City of Elysian**

The City of Elysian is located in the South-Central region of the State. It is located primarily in Le Sueur County, with a small portion of it also in Waseca County. The population for Elysian in 2020 was 704 people. It is located along State Highway #60, approximately at the midpoint between the Cities of Mankato to the West, and Faribault to the East, less than 30 miles from each. Both of these communities offer retail and job opportunities for the citizens of Elysian, especially Mankato, which provides a regional retail marketplace. Interstate #35 provides a link to the Minneapolis/St. Paul Metropolitan area at Faribault. Highway #60 is a busy traffic route with regular commuter traffic throughout the year and higher levels of seasonal traffic during the summer months. The highway provides the City of Elysian with a steady flow of transient customers and seasonal tourists attracted by the many area lakes. The natural environment, the regional bicycle trail (Sakatah Singing Hills Trail) and the downtown commercial area provide a charming atmosphere for residents and visitors to the community.

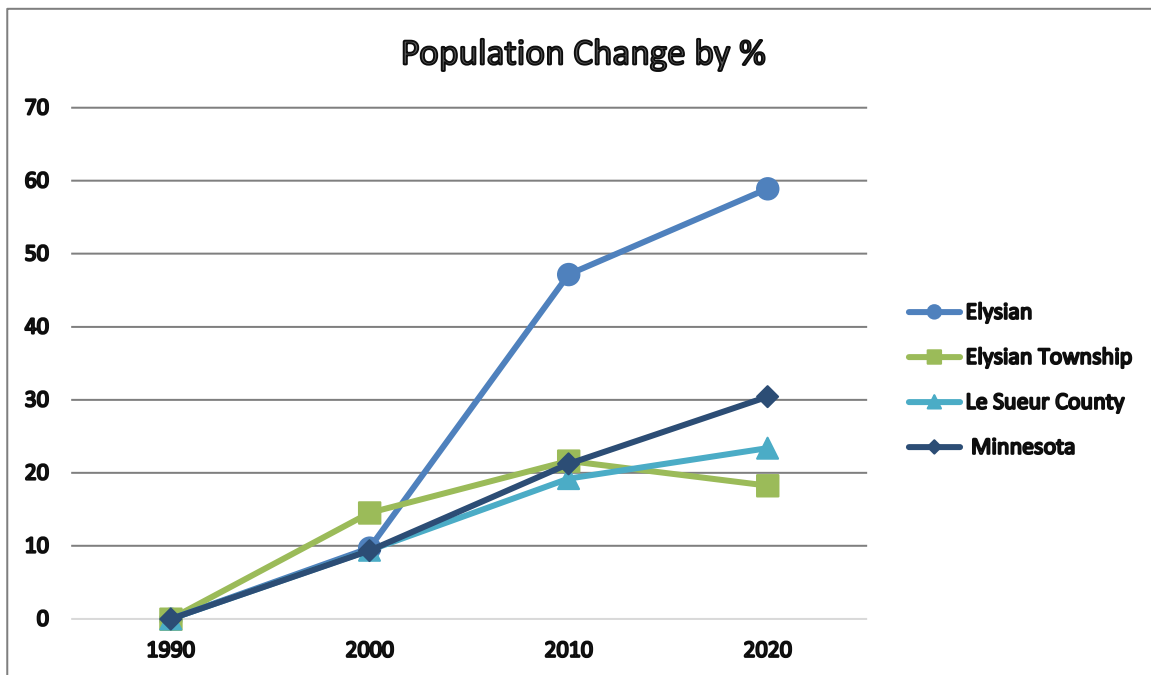


## Population

| Population Change – 1990 to 2020 |       |       |       |       |          |
|----------------------------------|-------|-------|-------|-------|----------|
|                                  | 1990  | 2000  | 2010  | 2020  | % change |
| City of Elysian                  | 443   | 486   | 652   | 704   | 58.92%   |
| Elysian Township                 | 860   | 985   | 1046  | 1017  | 18.26%   |
| Le Sueur County                  | 23239 | 25426 | 27703 | 28674 | 23.39%   |

Source: US Census - 1990 to 2020

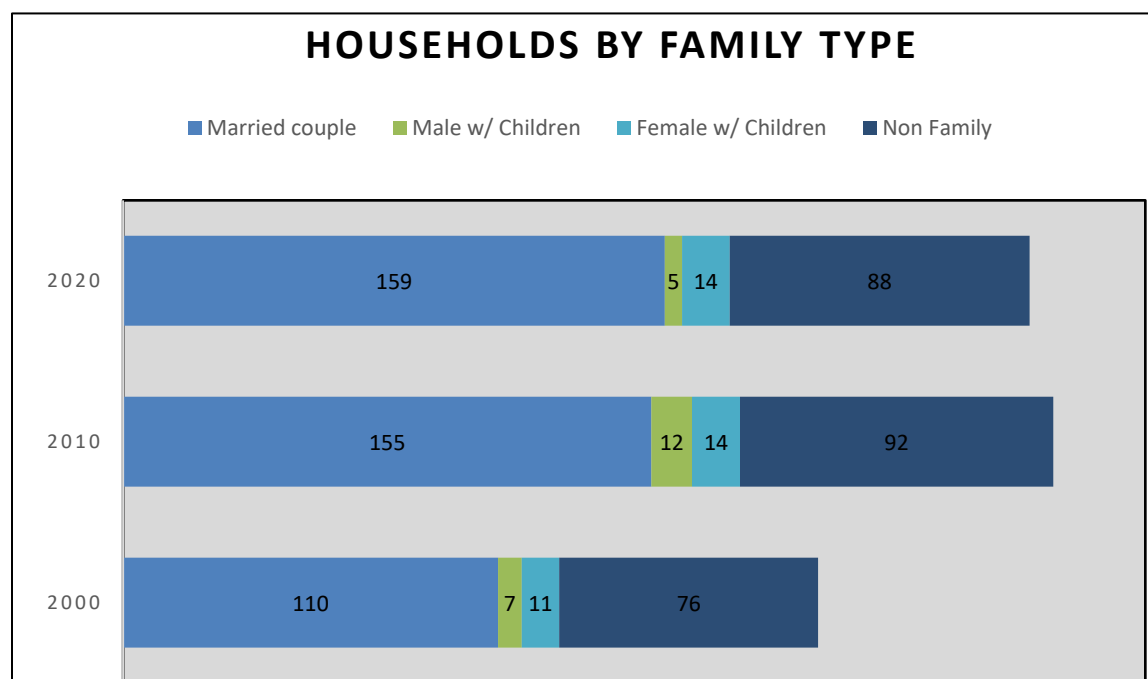
Virtually no growth was seen in Elysian between 1990 and 2000. The 1990s was a time when the community began to see a larger seasonal population, followed by a larger year 'round population. The growth in Elysian's population is seen as growing very quickly during the first decade of the 2010s, a 47% growth rate for the decade. Much of this growth is due to annexation activities taken place in the early 2000s. However, this area is experiencing serious growth pressures. Elysian Township is seen as steadily growing during the past two decades. In the comparison chart below, population growth rates between 1990 and 2020 are shown for Elysian, Elysian Township, Le Sueur County, and the State of Minnesota. During this time, Minnesota has seen a 30% growth in population, compared to the 18% growth for Elysian Township, the 59% growth seen by Elysian, and the 23% growth seen by Le Sueur County.



| <i>Elysian Household &amp; Housing Unit Change</i> |             |             |             |             |
|--|-------------|-------------|-------------|-------------|
| Year   | <u>1990</u> | <u>2000</u> | <u>2010</u> | <u>2020</u> |
| Population   | 443         | 486         | 652         | 704         |
| # of Households                                    | 171         | 204         | 273         | 277         |
| Persons per Household                              | 2.59        | 2.38        | 2.39        | 2.28        |
| # of Housing Units                                 | 207         | 276         | 372         | 393         |

Source: U.S. Census: 1990 to 2020

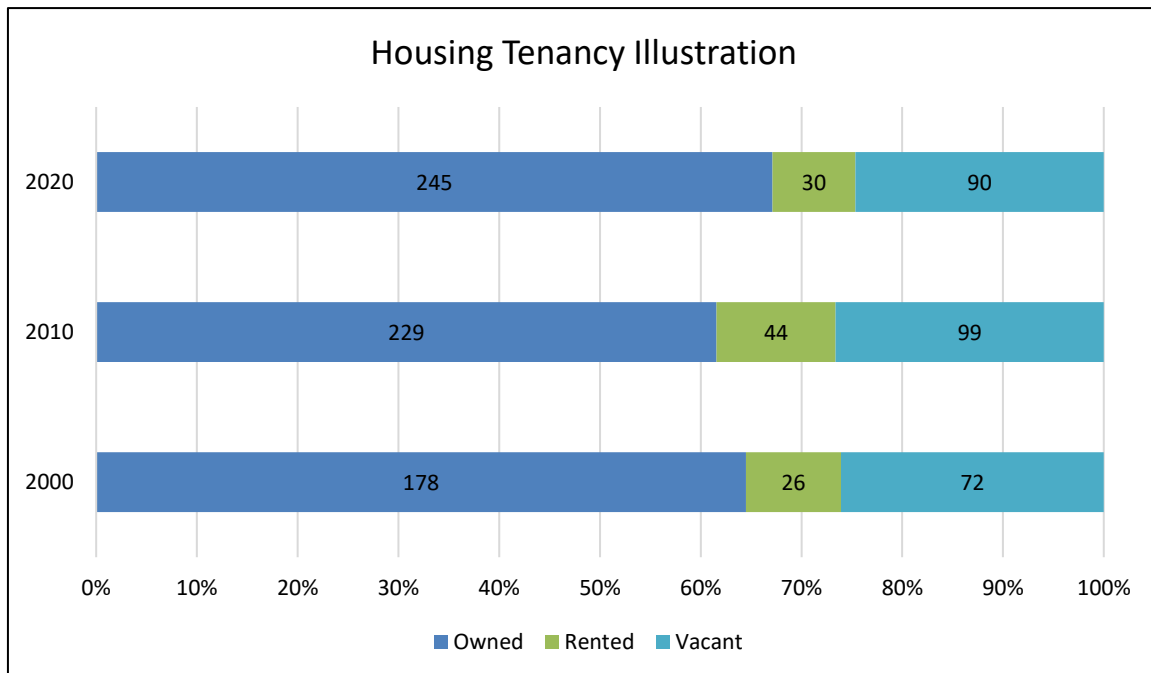
The table above illustrates changes in population, households, and housing units. The typical trend in observing the changes in households versus population is that the growth in households during the past 20 to 30 years occurs at a greater rate than population growth. For the most part, this is also true for Elysian. As can be seen in the table, the average persons per household declined from 2.59 persons in 1990 to 2.39 in 2010 and continued to decline in 2020 with 2.28 persons per household. The decline in the number of persons per household is projected to continue into the future by the State Demographer's office, primarily due to the aging of the population.



The composition of households is changing too, as can be seen in the chart above. However, the change seen is not typical for most communities. In Elysian, there has been growth in the number of households with a married couple, as well as a larger number of nonfamily households. Typically, most rural communities see increases in the number of nonfamily households and decreases in the number of married couples. In Elysian, virtually no change in the split between the two types of households is seen. This is probably due to the fact that much of the growth has been due to annexation, so that the changes are not noticeable. In addition, the number of single parent households is also a typical trend. This has remained fairly constant in Elysian.

## Housing

Housing in Elysian consists primarily of single-family homes, with a large number of seasonal cabins. In the graphic below, the occupancy status of housing units in Elysian is illustrated. Although there was an increase in the number of homeowners in Elysian, the overall percentage of homeowners actually decreased from 2000 to 2010, and then increased from 2010 to 2020. For rentals, there was an increase of 18 renters from 2000 to 2010, and a decline of 14 renters from 2010 to 2020. There has been a slight decrease in the number and percentage of units that are deemed by the census survey to be vacancies between 2010 to 2020.



## **City Infrastructure Summary**

The existing utility capacity is an important factor when considering long range plans for a community. Engineering studies conducted prior to the construction of the current wastewater treatment facility indicate that the capacity for the ponds could accommodate a population threshold of 952 persons. Currently, the population of the city is 704 people. Thus, the excess capacity of the wastewater facility could treat flows from an additional 248 individuals. When using an average of 2.28 persons per household, this would allow for an additional 108 housing units for the city before wastewater capacity is reached. Nearly 40 residential lots are currently platted and are available for development. While development of homes has slowed, the city should plan to undertake capacity analysis in approximately five (5) years, allowing for capacity expansion within the next ten (10) years. Most retail and small commercial units will require the same amount of wastewater capacity as a housing unit. It is important to note that the current capacity will not support the development of larger industrial developments or businesses requiring large amounts of water in their production process (meat packing, some manufacturing etc.).

The City's water supply storage capacity needs to be considered. Currently, the City has a storage capacity of 100,000 gallons and an average daily draw of 58,519 gallons. There have been draws from the system exceeding 200,000 gallons during the summer of 2007. In addition, water pressures have been an issue at times in the system.

The City is currently in the final design stage of construction of a Water Treatment Plant to treat community drinking water for Radium, Manganese, and Iron Bacteria. The project will also include infrastructure to transport water from Well #2 and Well #3 to the Treatment Plant and infrastructure to transport treated clean drinking water back to the water tower for distribution.

A big local issue is dealing with stormwater runoff. This document does have a goal of addressing stormwater runoff that eventually flows to Lake Elysian. Other stormwater treatment issues may come to the forefront at a later date as well and the City should be proactive in addressing these types of environmental degradation problems as well.

Investing in adequate equipment to continue serving the public's needs should be incorporated into a five-year capital improvements program. Among the needs for equipment is the need to replace one city truck.



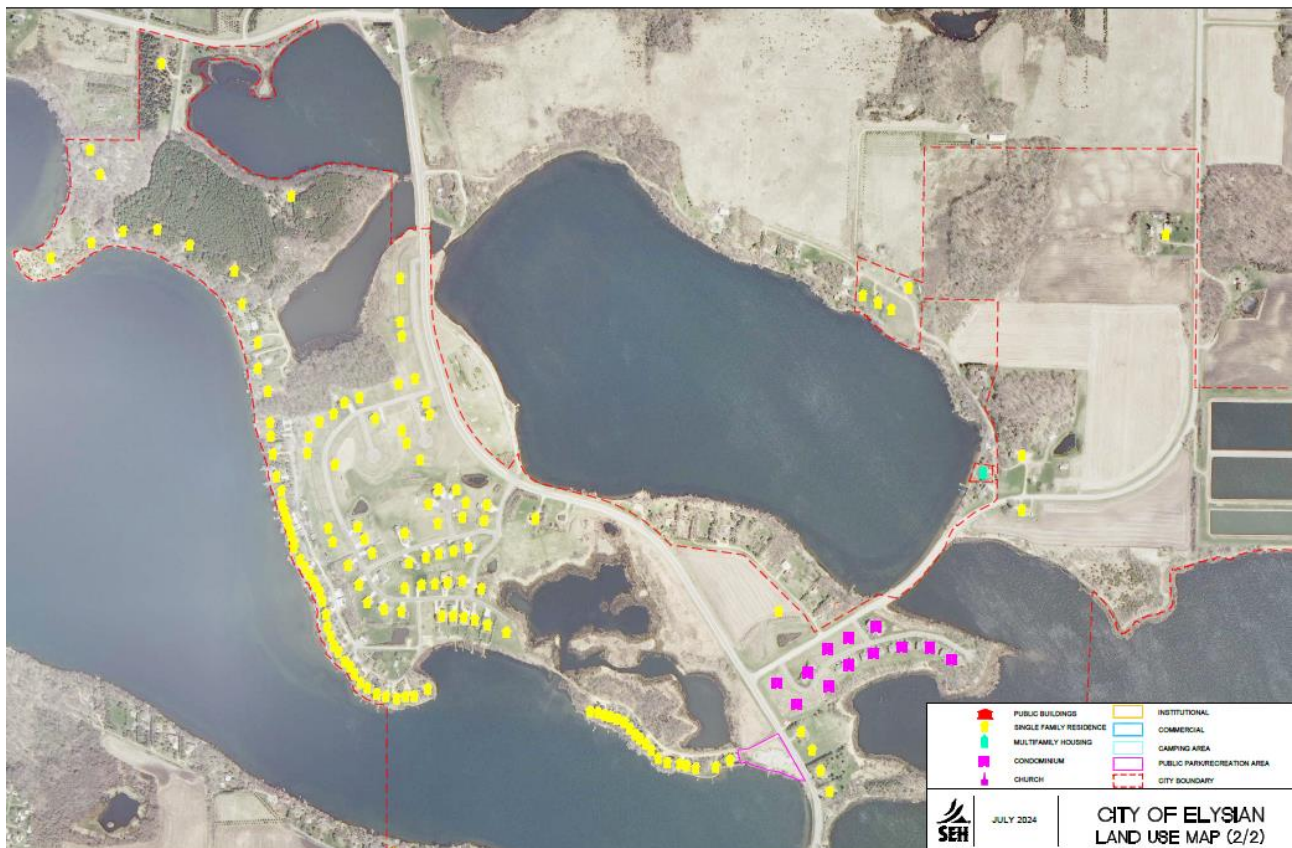
## Current Land Use

The following two maps illustrate “existing” land uses in the City surveyed in July of 2024. The maps illustrate the northern and southern halves of the City.

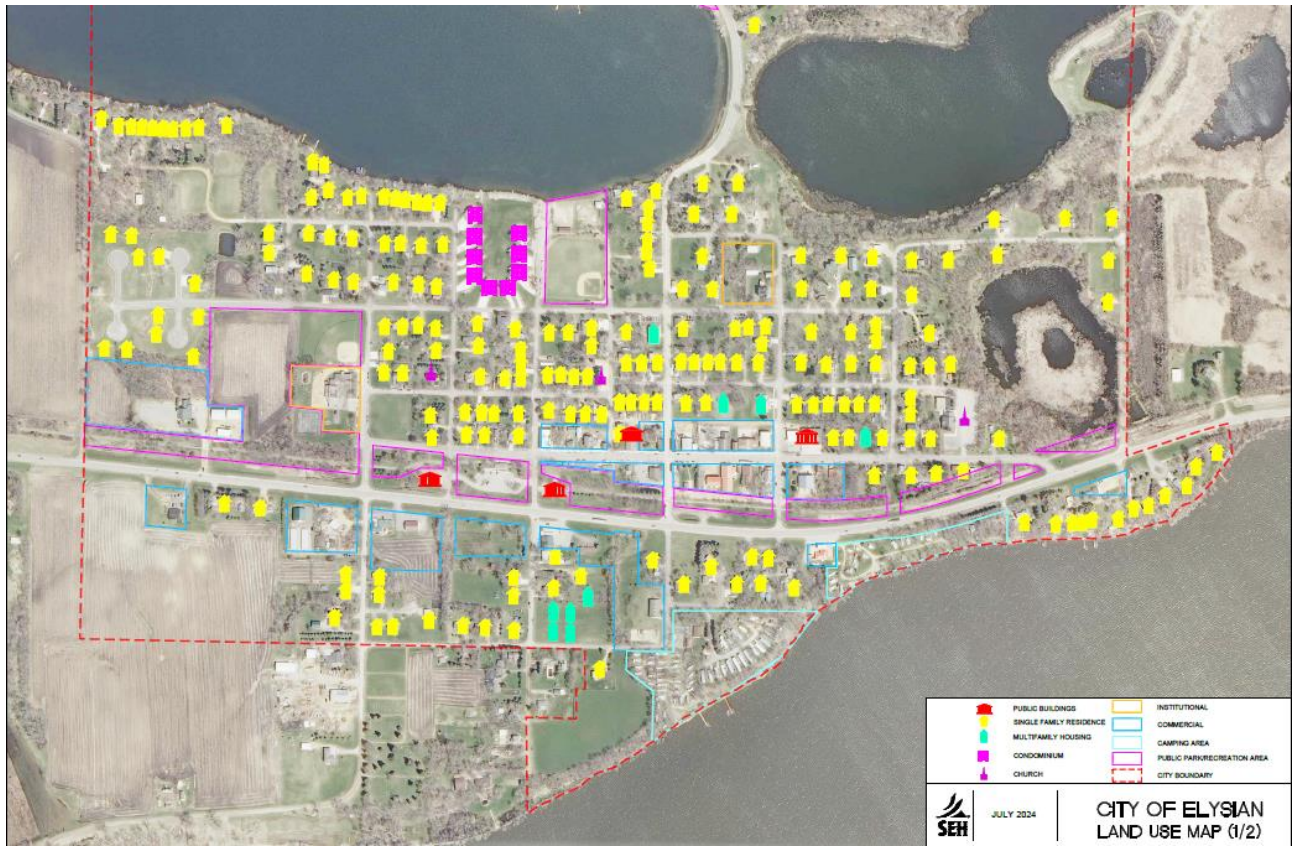
The northern half of Elysian is made of primarily residential areas, laid out in curvilinear patterns. It is also the location of the newest development areas. The newest areas added to the City include lands to the east of Rays Lake, land that has not had an approved plat accepted yet. The City’s wastewater treatment pond site is on the far east side of the City, just to the north of Lake Tustin.

The southern half of Elysian is typically laid out in a traditional grid pattern of rectangular lots, blocks, and streets. The existing land use patterns show that commercial areas are situated primarily along highway 60 and in the downtown central business district. Single-family housing occurs in the blocks surrounding these commercial areas and follows along the lakeshores, especially along Lake Francis. The current land use map illustrates the very limited amount of multi-family housing that exists in the community.

Land Use Map – Northern Half  
of the City of Elysian



Land Use Map – Southern Half  
of the City of Elysian





## Growth Limitations

The Natural topography and built city infrastructure present limitations to the amount of growth that the City will be able to bear in future years. While infrastructure (sewer, water, and roads, for example) can be expanded, topography is much more limiting. The topographic map shows variations in the Elysian area.



On the following page a map illustrating wetland areas that have been mapped by U.S. Fish & Wildlife Service show additional areas in and adjacent to the City that also pose limitations to city growth. Also, a second map illustrates the floodplain limitations that exist within the City of Elysian.

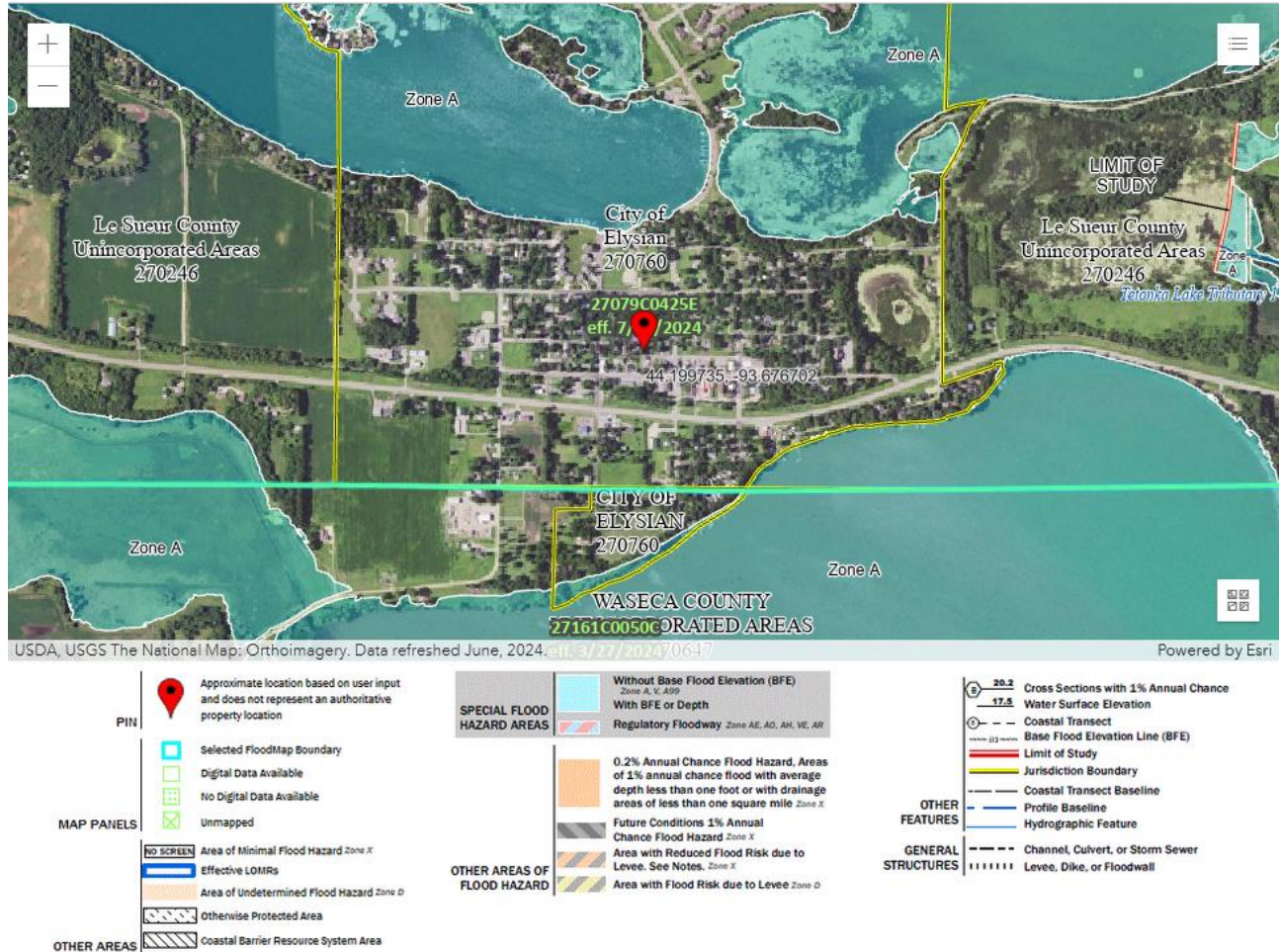


Wetlands Map

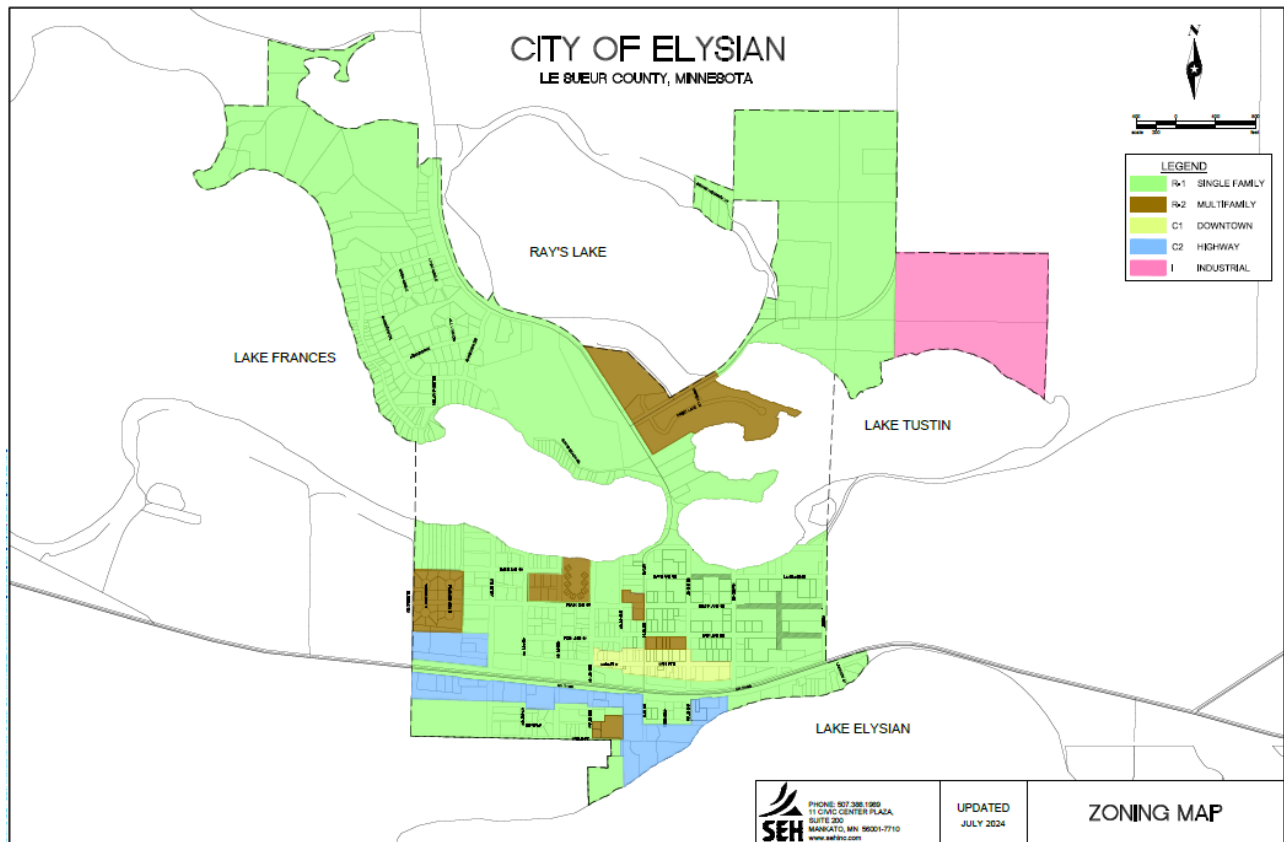




## Floodplain Map



City of Elysian Zoning Map



## COMPREHENSIVE PLAN ELEMENTS

### Community Mission Statement

The City of Elysian is a community with small town character, something that residents believe is important to maintain. The natural beauty of the lakes and other environmental resources in and around the community are an important part of maintaining this character and continuing to attract visitors to the community. The city will pursue a controlled approach to economic development, including providing methods for small businesses to locate or remain in the community. The City will consider the lakes and other environmental resources, as well as the state bike trail, as important resources in the continued development of tourism in the area. The City will seek out programs to provide assistance to maintain housing quality in the community. The accessibility of recreational and education programs for the citizens of Elysian will be pursued by the City. The provision of activities for youth in the community will be considered especially important, providing a healthy and safe atmosphere for families and individuals. The following is a list of concepts that the City of Elysian embraces as part of this comprehensive plan.

- Controlled, planned economic and physical growth
- Preservation of Small Town Character
- Use and Conservation of Natural Resources for citizens and tourism
- Rehabilitation of older neighborhoods
- Creation of programs and activities for youth and all residents
- Provision for the health, safety & welfare of the residents of Elysian

### Culture & Community Character

**Objective:** The goal of the City of Elysian is to maintain and encourage the preservation of the community with its current “small town” atmosphere. Both the physical preservation of buildings and preservation of places that are important landmarks to the citizens, and the social relationships among neighbors is a part of this unique community character. Providing cultural facilities will enable residents to participate in shared public activities and events. The continued use and conservation of the built and natural environment will be incorporated into city plans for promoting a pleasant, friendly, easygoing cultural atmosphere reflecting the current ambiance.

#### Goal #1

**Provide and maintain community cultural facilities for the citizens of Elysian.**

Strategies:

- Identify new opportunities to expand community cultural facilities focusing on Elysian history, natural resources, and public service recognition.
- Maintain and promote current and existing cultural community facilities.
  - The current facilities are the Genealogy Building and the Elysian Museum.

#### Goal #2

**Recognize tourism as an important resource to enhance the community culture and character.**

Strategies:

- Utilize local, regional, and state marketing approach for the City of Elysian focusing on the City’s natural resources and businesses.
- Use advertising or marketing tools would be most effective for Elysian’s resources and other tourism aspects, and allocate the resources to promote the community.

**Goal #3**

**Encourage community interactions.**

Strategies:

- Promote communication and connections between residents, businesses, and governmental agencies.
- Reinforce neighborhoods and develop connections between those neighbors.

**Goal #4**

**Expand local services to address locally expressed needs.**

Strategies:

- Utilize the Welcome Service for new residents, including the creation of contact literature for local services and coupons for local businesses and services that are available.
- Establish a local labor program to help local city residents that need help with simple labor tasks and chores, such as yard work, home maintenance, or other needs as identified.
- Offer a resource for citizens to participate in volunteer programs, a partial payment program, or some other type of labor program.
- Establish a resource for community members to research labor opportunities.

**Goal #5**

**Seek funding or identifying the means to preserve important buildings in the community.**

Strategies:

- Preservation Committee to continue to compile a list of important local buildings, their improvement needs, and potential financing mechanisms.



## **Housing**

**Objective:** The City of Elysian will encourage the provision of a well-balanced mix of housing for all types of households. Rehabilitation and preservation of existing housing and older neighborhoods will also be a priority.

### **Goal #1**

**Rehabilitate and preserve housing in town in order to provide adequate housing and a more desirable community atmosphere.**

#### **Strategies:**

- Develop approaches to inform citizens of city ordinances related to property appearance and upkeep.
- Develop marketing approaches to promote home improvement projects and exterior maintenance recognition. (Lawn of the month, etc.)
- Continue to pursue programs, such as Small Cities Development Grants, to fund the rehabilitation of older homes owned by low to moderate income persons in the community.
- Study current city codes for property maintenance and determine methods to strengthen and enforce these regulations. This may include more fully defined standards for property neglect.

### **Goal #2**

**Support market rate and a healthy balance of rental unit availability in price ranges to meet the needs of residence at all income levels in order to maintain adequate rental housing stock.**

#### **Strategies:**

- Develop plan to understand current mix of rental price ranges and to identify opportunities to balance inventory in different price ranges.
- Support development proposals involving the construction of market rate rental units.
- Collaborate with third-party agencies to provide affordable housing.
- Reference zoning ordinances to assist with the placement of all developments throughout the city.

### **Goal #3**

**Support Senior housing opportunities within the community.**

#### **Strategies:**

- Support the construction of housing units that would be directed and marketed to people 55 or older.
- Support housing co-operative type of housing configuration within the community.
- Determine opportunities with senior housing providers to develop facilities.

## **Economic Development**

**Objective:** The City of Elysian will pursue economic development activities in a thoughtful and prudent manner. The attraction of business and residential development into the City will be consistent with the vision of maintaining the small-town character of the City. Focus for economic development activities will be to: 1) retain existing business in the city, and 2) attract new small business into the community. Businesses that cater to the everyday needs of the citizens and those that provide additional attractions or services for the tourism and recreational industry are considered especially desirable to the City. As part of the Southern Minnesota Lakes Region, the City recognizes the attraction of the community as a regional tourism and recreational destination. Furthermore, the City views tourism as an opportunity for economic development for the community and will pursue activities which enhance the growth of this industry in and surrounding the city.

### **Goal #1**

**Attract and retain retail businesses providing everyday types of services and products to the citizens and visitors.**

#### **Strategies:**

- Efforts will be made to attract retail businesses which were specified in the community survey including a bakery, coffee shop, a grocery store, and a bike shop.
- Services that are needed in the community, as expressed by survey returns, include a motel/hotel and a Laundromat.
- The City will work with the regional Chamber of Commerce to actively recruit new small businesses to the community.
- Use local, regional, and state available incentives for retail businesses.
- Establish a local, regional, and state marketing approach for the City of Elysian focusing on the City's natural resources and businesses.
- Utilize the planning and zoning ordinances to ensure conformity and compliance.

### **Goal #2**

**Become an active partner in strengthening the tourism retail industry into the community's commercial district.**

#### **Strategies:**

- Support efforts to attract tourism related retailers, such as antique shops, gift shops, specialized craft or food sales shops, or others as identified.
- Assist in locating local space where vendors can set up flea market sales and/or farmer's market sales.
- Support efforts to attract the development of a hotel/motel.
- Collaborate with the Le Sueur County Board to assist with resolutions surrounding impasse with the operation of the Elysian Museum.
- Continue to grow and expand campsite to attract tourism.
- Establish a local, regional, and state marketing approach for the City of Elysian focusing on the City's natural resources and businesses.
- Identify opportunities to support the protection and stewardship of Elysian's natural resources.

**Goal #3**

**Support local opportunities which provide a significant impact on our local economic health.**

Strategies:

- Identify avenues to make the city of Elysian “easy to do business with” for new business development and for existing business’ expansion. (procedural, financial, etc.)
- Develop infrastructure plans, zoning adjustments and city boundary expansion plans to support economic growth.
- Identify and apply for funding aid to help local businesses expand their facilities, equipment, fix up storefronts, or address any code issues that may exist with their structures.
- Initiate regular communications with local business owners to help identify their business needs.
- Examine current zoning and building regulations and make the necessary modifications to ensure the development and redevelopment activities in the business district are consistent with the character of the community and provide separate locations for businesses that are inconsistent to this goal. Furthermore, local ordinances and regulations will be drafted to encourage the staging and placement of commercial development in a rational manner, consistent with overall growth in the community.

**Goal #4**

**Maintain the small-town character while promoting the growth of business in the area.**

Strategies:

- Identify and adopt a program for municipalities that emphasizes the character/community of the city. (example: “City of Character” program by the International Association of Character Cities (IACC))
- Use orderly annexation in continuance with the underlying land use plan map.

## **City Organization**

**Objective:** To maintain the current ability of the city as an organization to manage daily city business. Also, to provide for staff, facilities, and processes that will allow for a managed approach to achieving the goals for physical and economic growth for the community. Improvements in city facilities, communications, and technology are all goals for the city as an organization.

### **Goal #1**

**Provide Citizens with open, clear communication regarding city business through multimedia platforms.**

Strategies:

- Maintain the City’s identity and incorporate the identity logo/design/slogans into city publications/letterhead/communications materials while communicating with citizens.
  - Provide easy access to forms and other city information at City Hall with a kiosk to hold pre-printed forms; and
  - Work in conjunction with the private sector to maintain the City’s identity.
- Review effectiveness of current communications practices, methods and mediums and make adjustments.
  - Continue to improve the City’s web page, including the following:
    - publishing a regular “Did You Know” column for general educational purposes.
    - providing space for visitors to post questions or comments;
    - maintain a home page for “breaking news” that can be changed easily, as needed;
    - provide links to allow visitors access to City Ordinances and other codes; and
    - publishing and updating of the community calendar of events.
- Determine communications plans development cycles, reviews, and feedback mechanisms.

### **Goal #2**

**The City will continue to employ fiscally responsible planning for anticipated needs in infrastructure and equipment.**

Strategies:

- Create, implement, and maintain a capital improvement plan to provide structure and support for the upcoming years.
- Seek citizen input on infrastructure needs and Capital improvement challenges.

## **Natural Resources**

**Objective:** The natural resources within and surrounding the City of Elysian are some of the most valued aspects of the community by both its citizens and other stakeholders in the region. It is of the utmost importance to the citizens of Elysian that the quality of these resources be maintained and improved upon, while their use for recreation and enjoyment continues. Of particular concern is the quality of water in the area lakes and the health of fish and other wildlife populations that are dependent upon these resources.

### **Goal #1**

**Promote the improvement of the water quality of lakes in the area.**

#### **Strategies:**

- Acquire space for and develop adequate stormwater retention pond to adequately filter the stormwater that is released into Lake Elysian.
- Continue to extend the city water and sewer services to residential and commercial uses around the lakes so that individual septic systems may be phased out of use.
- Require proper stormwater management on each site as development occurs. This may include provisions for stormwater runoff and retention devices throughout the community.
- Identify and undertake actions to reduce impacts from development to all area lakes.
- Utilize lake ordinances to protect and preserve the lakes surrounding the city.

### **Goal #2**

**Promote and encourage collaboration with the community, local cities, counties, and the state on the improvement of water quality of the lakes in the area.**

#### **Strategies:**

- Assemble and distribute educational materials to lakeshore property owners about what they as lakeshore owners can do to help reduce development impacts to lake water quality.
- Partner with surrounding jurisdictions, county, and state entities to understand water quality, methods to improve, and protection requirements.
- Partner with non-governmental organizations focused on improving the water quality of Elysian's area lakes and wetlands.

### **Goal #3**

**Preserve and utilize the area's natural resources to continue to attract tourism into the city.**

#### **Strategies:**

- Expand recreational opportunities throughout the seasons and promote these activities beyond the residents of the community.
- Continue to work with the Minnesota Office of Tourism, the Area Chamber of Commerce, and other communities in the Southern Minnesota Lakes Region to promote the City and the region as a tourist and recreational destination.
- Provide and develop primitive campsites on Lake Tustin for recreational use and for bicyclists who travel along the Sakata trail.

- Establish a local, regional, and state marketing approach for the City of Elysian focusing on the City’s natural resources and businesses.

**Goal #4**

**Continue to expand efforts of lakeshore preservation within and surrounding the community.**

Strategies:

- The City will work with the DNR, citizen lake advisory boards, and others interested in the conservation of shoreland to provide the needed information to property owners regarding shoreland regulations. This may include an educational effort to current landowners/homeowners.
- Determine methods and content to inform and communicate the vital importance of preserving lakeshores to residents and to visiting users of Elysian’s lakes and waters.

**Goal #5**

**Promote management of fish and animal populations within the community through the use of ordinances and regulations regulating land use.**

Strategies:

- Utilize DNR guidelines in the development of water retention ponds and other elements that may retain beneficial habitat to naturally occurring animal populations.

**Goal #6**

**Promote the conservation of local water resources, specifically groundwater resources.**

Strategies:

- Research methods that have been employed by other municipalities that have been hit by water shortages. Adopt those methods that would seem to fit the community. Such methods might include the following:
  - The use of rain barrels
  - The use of rain gardens
  - The use of retention ponds

**Goal #7**

**Continue to implement procedures to preserve the water quality throughout the city.**

Strategies:

- Determine effectiveness of current water quality capabilities and develop plans with short, mid-range and long-term projects to improve inefficiencies.

**Goal #8**

**To help bring updates and improvements to the State Trail.**

Strategies:

- Re-establish the trail improvement association for purposes of organizing improvement efforts and lobbying efforts to improvements to the trail system;

*Elysian Land Use Plan – Approved by Council September 9, 2024*

- Help facilitate continuous cleanup efforts of the trail section in Elysian's region; and
- Develop rustic campsites at Tustin Park.

## **Recreation & Youth**

**Objective:** The City of Elysian recognizes the place that recreation holds in providing for the general health and welfare of its citizens, and the maintenance of social contacts within the community. It is the goal of the City to encourage, enable and/or provide recreational opportunities to citizens of all ages. The City particularly recognizes the special needs for recreational opportunities among its youth.

### **Goal #1**

**To provide new recreational facilities for the general enjoyment and education of all residents of the City of Elysian throughout the year.**

Strategies:

- Promote and provide recreational activities for all seasons.
- Provide maintenance assistance surrounding all activities on Lake Francis
- Continue to develop spaces for recreational use and enjoyment.

### **Goal #2**

**Expand and improve existing recreational space for the purpose of making such space more usable.**

Strategies:

- Expand the ballpark area and make improvements to facilities.
- Expand the ballpark area to include space for recreational use.
- Expand usage of existing space – perhaps work with the school district to allow after hours use of facilities for exercise room, basketball court, tennis court, or other uses as would be appropriate.
- Maintain and update parks and recreational facilities for enjoyment.



## **Public Safety**

**Objective:** The City of Elysian recognizes its role in providing citizens with a safe and healthy atmosphere. The City will continue to work closely with other agencies in order to bring fire, police, and medical emergency services to the community.

### **Goal #1**

**Foster a proactive approach to public safety needs to the community.**

Strategies:

- Work with the Minnesota Department of Transportation, County Engineers, and any other agencies that have jurisdiction over roads and transportation issues in and around the city.
- Design methods that will encourage the slowing of speeds along highway corridors. These methods may include limiting access points along highways.
- Determine milestones, in conjunction with city growth/economic development plans, to establish new or expand existing public safety capabilities.

### **Goal #2**

**Public safety is a concern and needs proactive attention from not only law enforcement officials, but from its citizenry as well.**

Strategies:

- Foster efforts to re-enact the neighborhood watch efforts that were in place several years ago.
- Continue partnership efforts with Le Sueur County Sheriff's office to determine the needs of the community.

## **Transportation**

**Objective:** To provide transportation in and through the city without causing harm to the desired character. Allow or encourage bicycle and pedestrian modes of transportation within the city and its surrounding area.

### **Goal #1**

**Provide safe and reliable routes and methods of transportation within and through the City while maintaining the desired character of the community.**

Strategies:

- Collaborate with the Minnesota Department of Transportation and the County Engineers of both Le Sueur & Waseca Counties to maintain or improve traffic patterns into and through the city.
- Ensure maintenance of local streets within the City meets current design standards and traffic control devices for safe and efficient movement of people in all modes of transportation including automobiles, bicycles, golf carts and pedestrians.
- Determine methods that promote bicycling and pedestrian modes of transportation within the community.
- Establish and regulate safe routes that connect the lakes to downtown.

### **Goal #2**

**To acquire or designate additional parking spaces in town.**

Strategies:

- Ensure adequate parking space within the community while maintaining the desired character of the community as the City accomplishes its economic growth plans.

### **Goal #3**

**Provide continued improvements to local streets within the City.**

Strategies:

- Draft and adopt a Capital Improvements Program that includes a street improvement schedule.
- Develop assessment policies designed to help fund street improvements.

## **Land Use**

### **Objective:**

Effective land use helps ensure the city is able to accomplish its growth plans while preserving its community culture and attractiveness.

### **Goal #1**

**Promote growth internally through residential, industrial, and commercial expansion.**

#### Strategies:

- Identify activities that help preserve and expand many of the current businesses, buildings, and commercial land.
- Collaborate with developers for public and private properties within the city while sustaining the natural and economic environment.

### **Goal #2**

**Enforce all zoning ordinances surrounding vacant lots, residential homes, and commercial property.**

#### Strategies:

- Develop communications plans informing residents of zoning ordinances and enforcement mechanisms.
- Review existing zoning variance procedures and determine adjustments.

### **Goal #3**

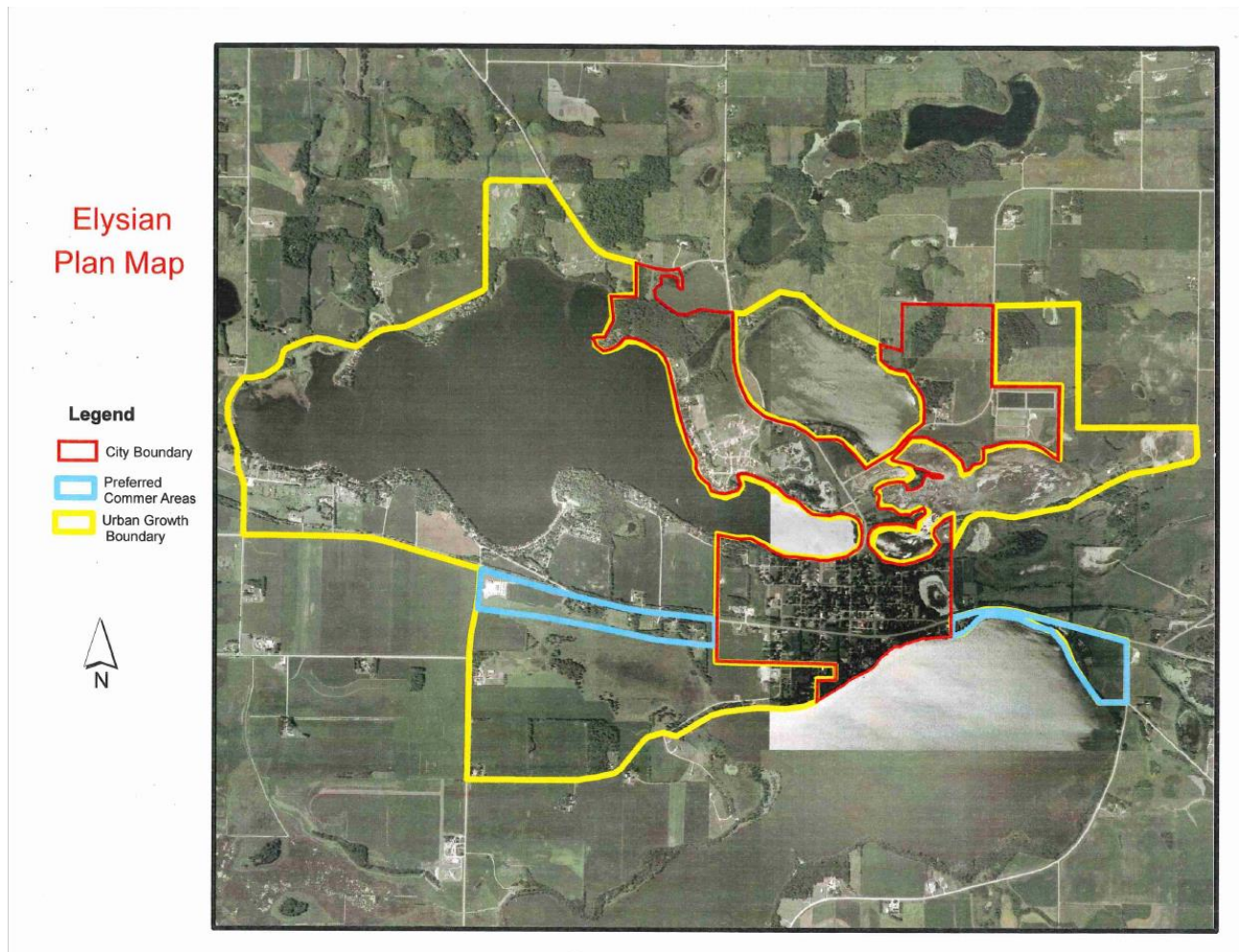
**Continue to review and permit orderly annexation as the city continues to grow.**

#### Strategies:

- Encourage and promote innovations in development techniques in order to obtain maximum livability and excellence in planning and design for all new developments.
- Designate adequate vacant land to allow for the growth of residential and commercial areas.
- Collaborate with developers and local municipalities to annex land for the development of underutilized property.

## Land Use Plan Map

A land use plan can be defined as a compilation of policy statements, goals, standards, maps, and action programs for guiding the future development of private and public property. As such, the previous section lays out the policies, goals, and programs for the land use plan for the City of Elysian. The land use plan also requires a map, illustrating a pictorial view of the goals and policies determined by the City. This map designates the growth corridor or a reasonable extended area that the City intends to provide urban services to at some point in time. It is important to remember that this is not a zoning map, which dictates where types of uses may occur. Instead, this map is simply an illustration of expected growth patterns. Identification of land needed for future public use permits both the public and private property owners to adjust their building plans equitably and conveniently before investments are made which will make such adjustments difficult to accomplish.



## **Comprehensive Plan Maintenance & Amendments**

**Policy:**

The Planning Commission should, on a regular basis, recommend changes to the Comprehensive Plan to the City Council. These changes should relate primarily to the activities that must be pursued in order to meet the goals and objectives of the Comprehensive Plan. The establishment of new goals and objectives for the community should provoke the creation of a new comprehensive planning effort, which includes citizen participation.

Before adopting amendments to the Comprehensive Plan, the planning agency shall hold at least one public hearing thereon, as required by State Statute 462.355 Subdivision 2. A notice of the time, place and purpose of the hearing shall be published once in the official newspaper of the municipality at least ten days before the day of the hearing.